

# PEUGEOT 404 CONVERTIBLE

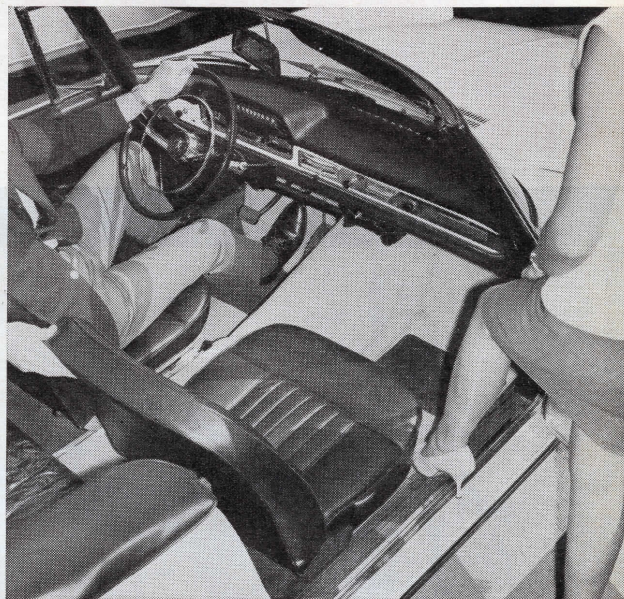
Like the 190SL

Photos: Bob D'Olivo



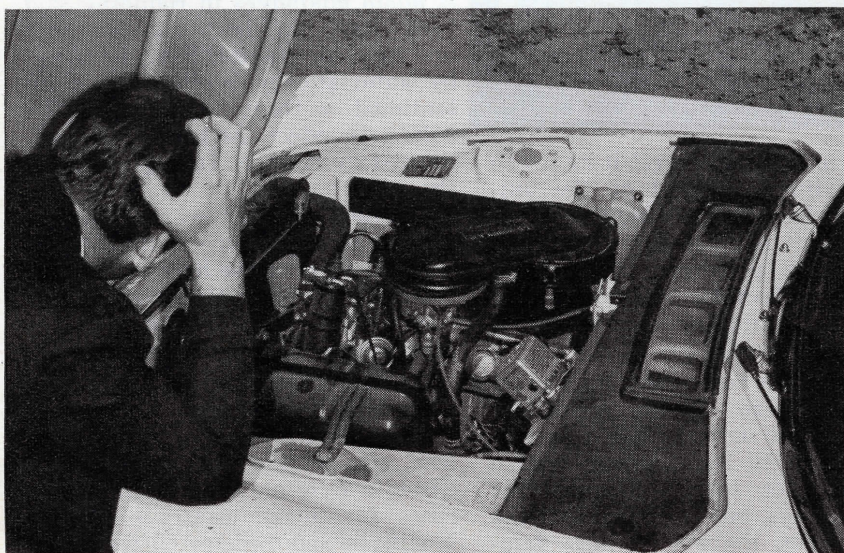
1

Stopping power of the Farina-designed convertible is excellent, especially when motivated by the sight our Competition Editor has just beheld.



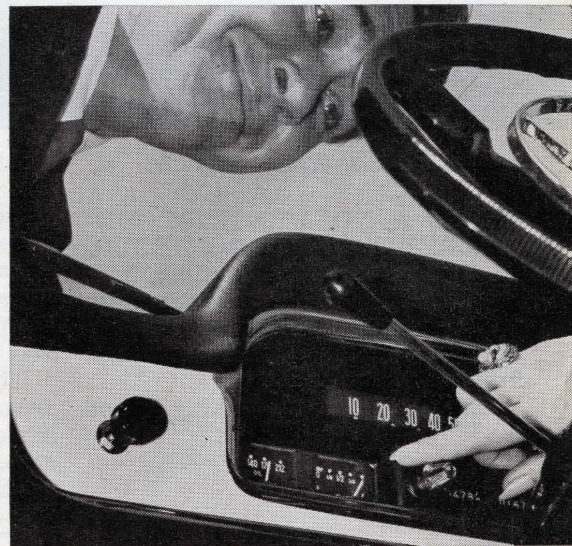
2

Interior trim is tasteful and expensive. But tan carpets with blue paint and black upholstery? Seems to attract gals, tho!



5

Con continues as he stares at the 1.6-liter four-banger. Smooth and economical, it delivers a whopping 76 horsepower, is angle-mounted in the chassis.



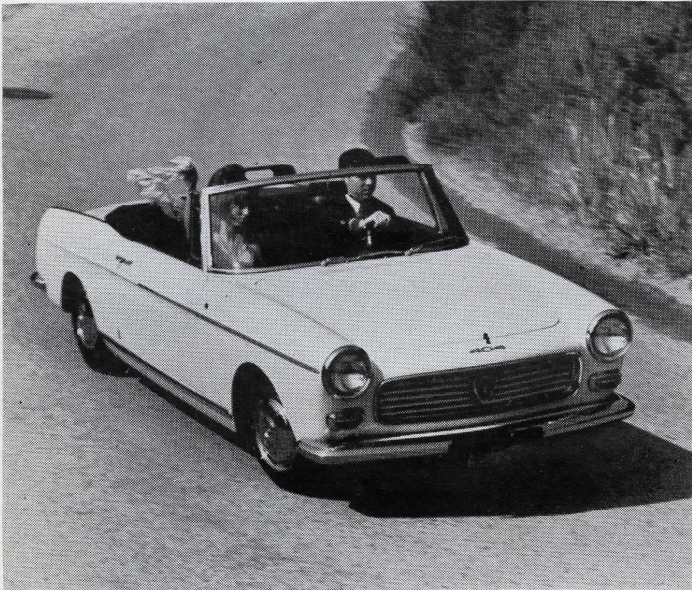
6

She blows his cool by pointing to the legible gauge on functional, padded dash. Is that a poison ring?



it must have a place... It's just that we're not certain where that may be!

By Jerry Titus



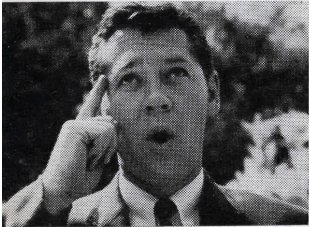
3

Cornering with gay abandon! It understeers a bit, but body roll is moderate and ride is very nice. Hey, he's heading for Griffith Park!



4

Is that cornball giving her the old out-of-gas routine? Judging the attractive Farina-designed lines, she figured him for more taste.



7

Adios, Big Daddy! Easy exit comes in handy for la femme.



8

But he remembers he has an ace-in-the-trunk. Would you believe an Aladdin's Lamp? Trunk space is big.



9

Now the adios is on the other foot. Figuring there's at least safety in numbers, he conjured up a pair this time. Column shift makes seating three easy.